



# Fire and Flame detection

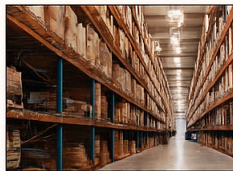
 AI FIRE DETECTION	 APP REMOTE MONITORING	 FIRE ALARM PHONE MOBILE PHONE
 FIRE ALARM OUTPUT	<b>SEVEN MAJOR FUNCTIONS</b>	 VOICE BROADCAST
 AUTOMATIC/MANUAL TOUCH FIRE EXTINGUISHING	 AUTOMATIC POP-UP SCREEN ZOOM FIRE REMINDER	



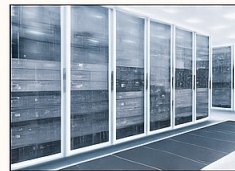
MANUFACTURING WORKSHOPS



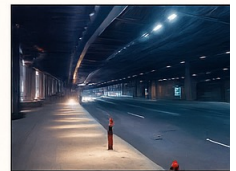
SCHOOLS



WAREHOUSES



SERVER ROOMS

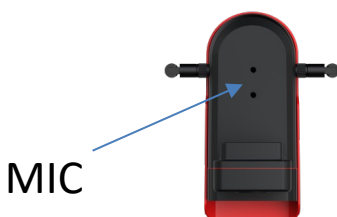


TRAFFIC TUNNELS

## TVF025-12D


Products feature:

1. 3 band infrared flame detection sensor
2. with flame detection, human detection, motion detecting, real-time push alarm information, Acousto-optic alarm equipment
3. support alarm linkage voice warning, white light alarm, video capture, upload to the account of esee cloud.
4. Support the query of historical fire alarm information and the playback function of video recordings.
5. Support remote monitoring via mobile APP, allowing you to check alarm information, live scenes and historical alarm videos anytime and anywhere.
6. 4G connection, scan the QR code to easily connect the camera to the network, simple and convenient operation.
7. Supports MIC and speaker, supports two-way voice communication
8. Alloy material body, rainproof outdoors, stylish, beautiful and exquisite in appearance
9. IP66 waterproof rating, TVS 4000V surge protection





# AI Fire and Flame detection Network IP camera

Model Nmuber	TVF025-12D
Pixel	3MP
Sensor	1/3" CMOS Sensor
Lens type	Fix lens
Lens Focus	4mm
Resolution	Mainstream: 2304*1296、sub stream: 800*448
Frame rate	15fps
compress Format	H.264/H.265 Video encoding, supporting dual-stream mode
Audio format	AAC, G711
storage	TF card storage, (Max in 256G)
Audio function	Two way audio
4G Frequency band	FDD-LTE:B1/B3/B5/B8; TDD-LTE:B34/B38/B39/B40/B41;
RJ45 interface	10-100M self-adaption / Onvif
minimum illumination	color: 0.1Lux,black and white 0.01 Lux
IRLED	4led light+4IR
Lighting supplement distance	IR 20~30 M, black white 15~20M (Depending on the environment)
Power	DC12V
Power Consumption	 Average Power consumption $\leq 6W$



## “Why you choose us ?

Exceptional After-Sales Service that differentiates us from others.

- 24x7 instant on call support and Monthly or yearly service agreement.
- Visit and Preventive Maintenance:-
  - Inspection of all CCTV cameras and server equipment's.
  - Cleaning Lenses and calibrating of cameras for optimal performance.
  - Regular checking and updating firmware/software.
- Repairing and Troubleshooting:
  - Prompt response to any malfunction or breakdown of equipment.
  - Diagnose and repair the specific issues to minimize surveillance downtime.
- 24/7 Technical Support:
  - Technical team's support for assistance and guidance to your team.
- Training and Documentation:
  - Creating SOP as per your individual requirements.
  - Conducting training and development sessions for your individual business IT team.
  - Providing comprehensive documentation of our system configurations.

Web: <https://tecnotron.my.canva.site>  
YouTube: <https://www.youtube.com/@tecnotronbd>  
Facebook: <https://www.facebook.com/tecnotron.biz>

